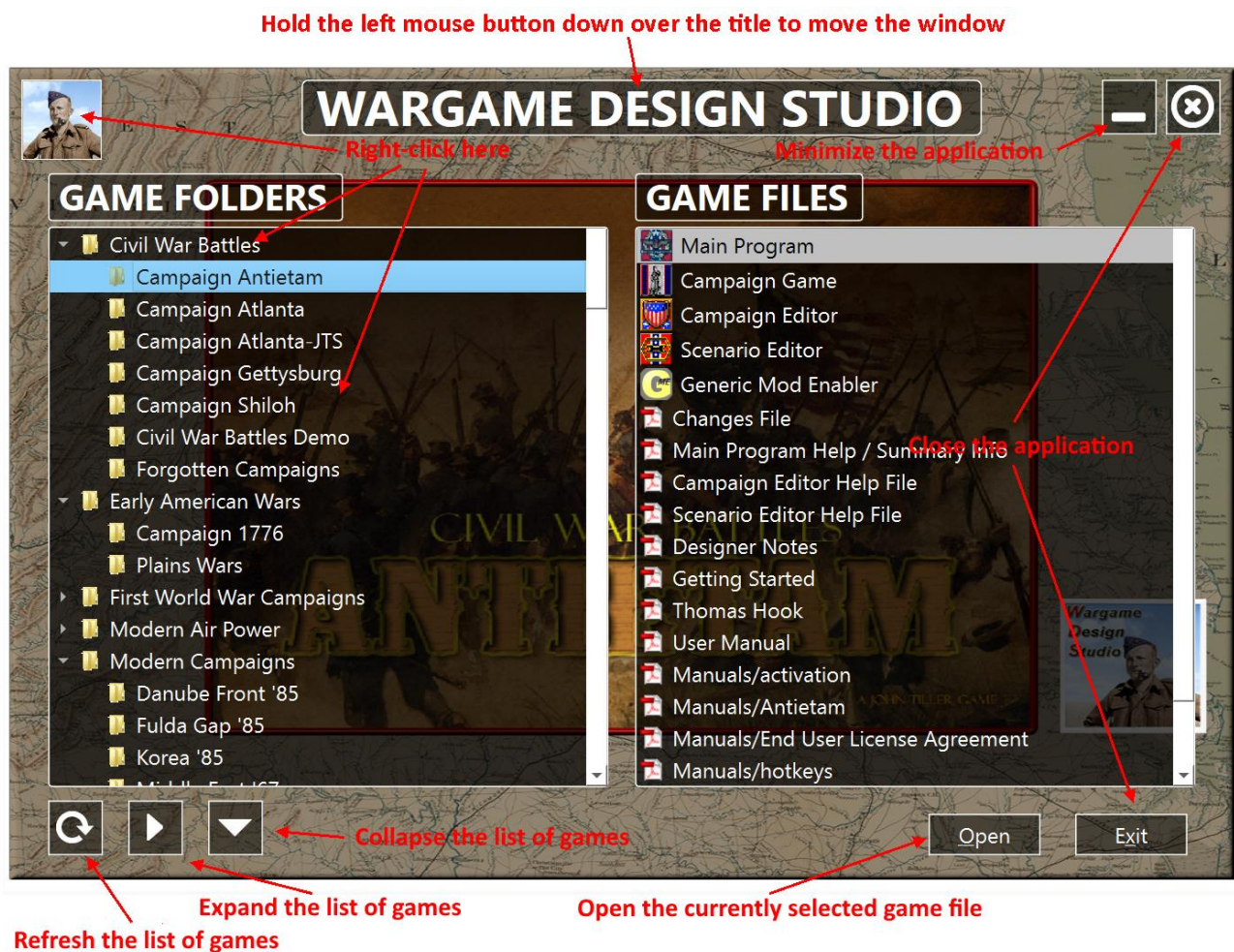


# New Menu Program

## New Interface

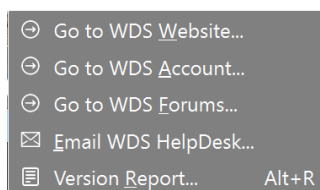


There are several differences between this version of the Menu Program and the previous one. The most visually obvious one is that the list of games is now grouped by game series. You will also, hopefully, notice a considerable difference in the start-up speed of the new version. The list of games is wider than before to cater for longer folder names. In addition, there are extra buttons available whose functionality is discussed below.



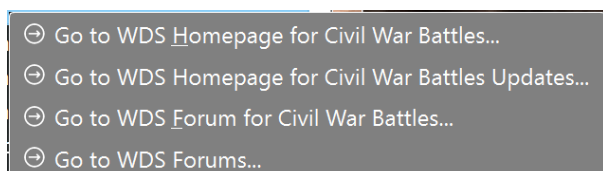
The screenshot above shows the functions of the new buttons as well as how to access further functionality by right-clicking on parts of the user interface. As in the previous version, double-clicking on a Game File will open the selected file and the Open button offers the same functionality. In the screenshot above, the Campaign Antietam game would be run. In addition, double-clicking on a Game Folder will open the Games' install folder.

Right-clicking on the WDS Logo will show the following context menu:



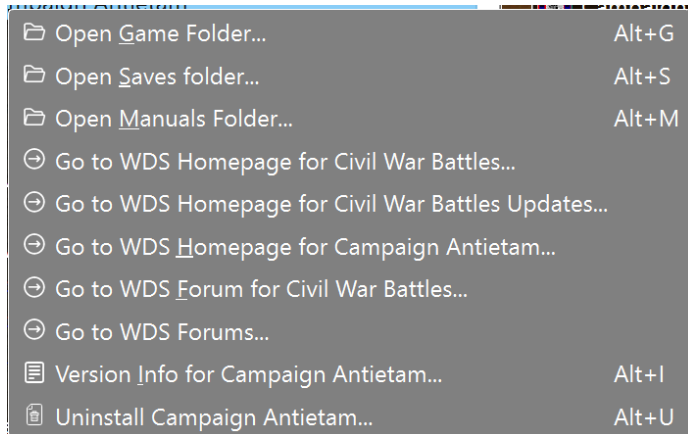
From this you can go to the WDS Website, go to your WDS Account Login, go to the WDS Forums Board Index, start an Email to the WDS Helpdesk or show a Version Report (more on that last one below). All webpages will be opened in your current Browser.

Right-clicking on a Game Series will show the following context menu:



From this you can go to the WDS Collections & Updates webpages for the relevant Game Series, go to the WDS Forums for that same Game Series or go to the WDS Forums Board Index (in the same manner as the context menu found by right clicking the WDS Logo.

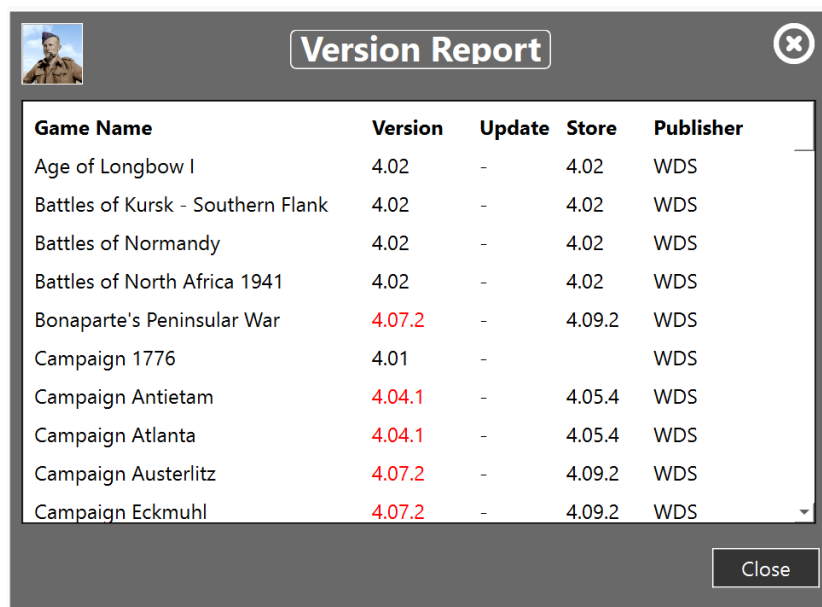
Right-clicking on a Game itself will show the following context menu:



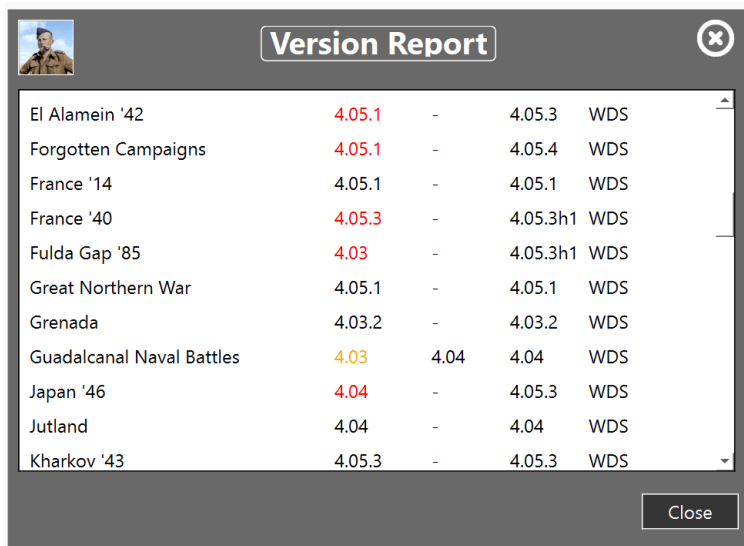
In addition to the items mentioned previously, you can open the Game’s install folder, its Save folder or its Manuals folder. Also, you can go to the WDS Product webpage for the selected Game, show Version Information for that Game (see below) or even uninstall it.

## Version Report

Right clicking the WDS Logo and selecting Version Report will show the following dialog:



The “Version” column in the report is the last full install done from an MSI file. The “Update” column is the last version of an “update” exe that has been run rather than a full install and the “Store” column is the latest version available from your store account.



The screenshot shows a 'Version Report' dialog box with a list of games and their versions. The versions are color-coded: red for updateable, orange for up-to-date but with an update exe, and grey for the latest version. A 'Close' button is at the bottom right.

Game	Installed Version	Update Version	Store Version	WDS
El Alamein '42	4.05.1	-	4.05.3	WDS
Forgotten Campaigns	4.05.1	-	4.05.4	WDS
France '14	4.05.1	-	4.05.1	WDS
France '40	4.05.3	-	4.05.3h1	WDS
Fulda Gap '85	4.03	-	4.05.3h1	WDS
Great Northern War	4.05.1	-	4.05.1	WDS
Grenada	4.03.2	-	4.03.2	WDS
Guadalcanal Naval Battles	4.03	4.04	4.04	WDS
Japan '46	4.04	-	4.05.3	WDS
Jutland	4.04	-	4.04	WDS
Kharkov '43	4.05.3	-	4.05.3	WDS

The Version Information is color-coded. Red indicates that your version can be updated either via a full installation or via an update exe. Orange indicates that the install is up to date, but an update exe was used rather than doing a full install (Guadalcanal Naval Battles in the above screenshot in contrast with Jutland).

Note: The Version Report is run in the background on application start-up and also when the Refresh functionality is invoked. This involves a registry scan and download of the list of store games and their versions. If this task has not completed, the relevant context menu options or hotkeys will not be available. The Menu Program needs to access the Internet in order to properly run the Version Report. Internet access is only required for this one function, however. Everything else is handled locally.

## Version Info

Right-clicking on a Game and selecting “Show Version Info” for a Game will show the same information as for the Version Report but restricted to an individual game:



The screenshot shows a 'Version Info' dialog box for the game 'Campaign Shiloh'. It displays the installed version (4.04.1), update version (-), and store version (4.05.5). There are buttons for 'Uninstall' (a circular arrow) and 'Show Updates' (a document icon) on the bottom left, and a 'Close' button on the bottom right.

Game	Installed Version	Update Version	Store Version
Campaign Shiloh	4.04.1	-	4.05.5

The Game can also be uninstalled from here by clicking on the Uninstall button on the bottom left of the dialog. In addition, the Game Series Updates page can be accessed from here by clicking on the button above the Uninstall one.

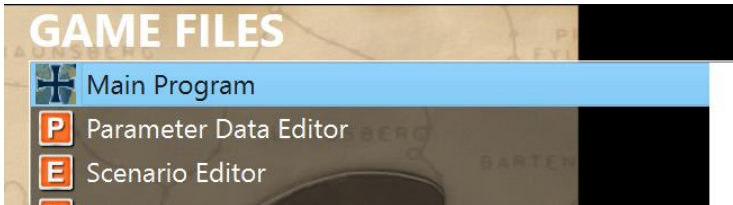

Color-coding is the same as on the main Version Report.

Note: This relies on the Version Report so will also not be available if that task has not completed.



## How To

Shortcuts to important functionality available in the Menu Program.

What	How
Open a Game File	<ul style="list-style-type: none"><li>• Double-click on the file item in the right-hand list.</li></ul>  <p>If the item is highlighted (as above)</p> <ul style="list-style-type: none"><li>• Click on the Open button.</li><li>• &lt;Alt+O&gt; key combination</li></ul>
Open a Game Folder in Windows Explorer	<ul style="list-style-type: none"><li>• Double-click on the file item in the left-hand list.</li></ul>  <p>If the item is highlighted (as above)</p> <ul style="list-style-type: none"><li>• &lt;Alt+G&gt; key combination.</li><li>• Right-click on a Game and choose the “Open Game Folder” option.</li></ul>
Exit the application	<ul style="list-style-type: none"><li>• Click on the Exit button.</li><li>• &lt;Alt+X&gt; key combination</li><li>• Click on the Close button</li></ul>
Minimize the application	<ul style="list-style-type: none"><li>• Click on the minimize button:</li></ul>
Move the application window	<ul style="list-style-type: none"><li>• Hold the mouse button down on the application title and then move the mouse.</li></ul>
Refresh the list of games (after an install or update for example)	<ul style="list-style-type: none"><li>• Click on the Refresh button.</li><li>• F5 key.</li></ul>
Show the Version Report	<ul style="list-style-type: none"><li>• Right-click on the WDS Logo and choose the “Version Report” option.</li><li>• &lt;Alt+R&gt; key combination.</li></ul>
Open the Saves Folder	<ul style="list-style-type: none"><li>• Right-click on a Game and choose the “Open Saves Folder” option.</li><li>• &lt;Alt+S&gt; key combination</li></ul>

Open the Manuals Folder	<ul style="list-style-type: none"> <li>• Right-click on a Game and choose the “Open Manuals Folder” option.</li> <li>• &lt;Alt+M&gt; key combination.</li> </ul>
Show the Version Information for a Game	<ul style="list-style-type: none"> <li>• Right-click on a Game and choose the “Version Info” option.</li> <li>• &lt;Alt+I&gt; key combination.</li> </ul>
Uninstall a game	<ul style="list-style-type: none"> <li>• Right-click on a Game and choose the “Uninstall” option.</li> <li>• &lt;Alt+U&gt; key combination.</li> <li>• Open the Version Info Dialog for a game and click on the Uninstall button.</li> </ul>